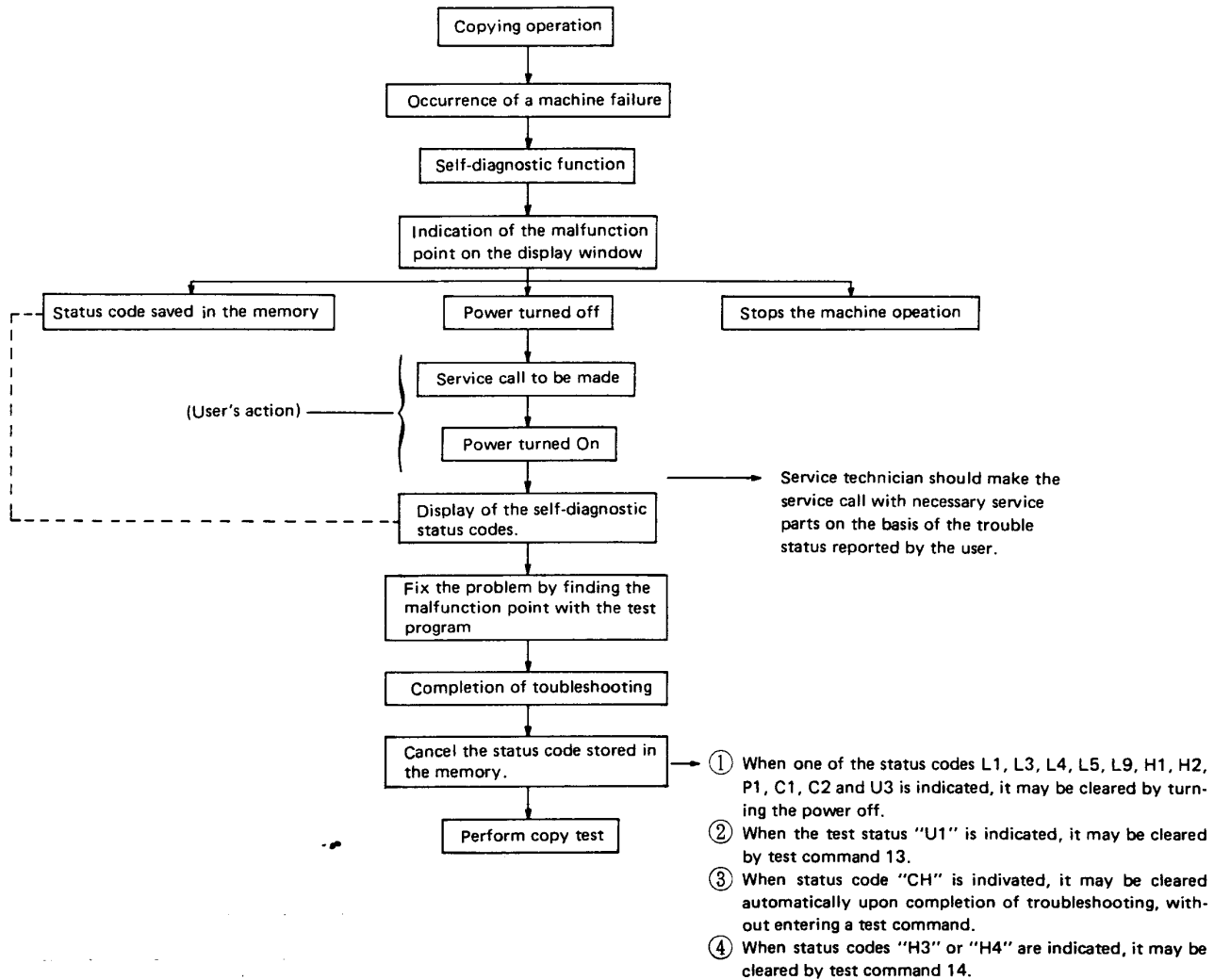


## 2. SELF DIAGNOSTIC FUNCTIONS

When the copier malfunctions, operations are suspended immediately and a status code is indicated on the multi-copy display. Status codes are represented as an alpha-numeric combination of figures.

### A Outline



## B Types of self-diagnosis

Status code	Trouble symptom and cause	Test command used
L1	Failure in mirror base forward movement. This status is issued if the mirror feed complete signal has not been received by the main PWB from the mirror motor drive PWB within 6 seconds after the main PWB has sent the mirror start signal to the mirror motor drive PWB. Possible cause: Failure in the main PWB. Failure in the motor drive PWB. Failure in the wiring harness between the main PWB and the motor drive PWB. Failure in the mirror motor.	1, 2
L3	Failure in the mirror base return movement. This status is issued if the main PWB has not received the mirror return complete signal from the mirror motor drive PWB within 3.5 seconds after the main PWB has received the mirror feed complete signal from the mirror motor drive PWB when the mirror base has completed the forward movement. Possible cause: Failure in the main PWB. Failure in the mirror motor drive PWB. Failure in the wiring harness between the main PWB and the mirror motor drive PWB. Failure in the mirror motor.	1, 2
L4	Main motor trouble Possible cause: Failure in the main motor drive PWB. Main motor seizure or irregular rotation. Mirror base seizure.	Open F501 (3A) fuse 25
L5	Lens home position sensor PWB failure	26
L9	The sorter home position sensor (SHP) was not detected by 3 seconds after the following: 1-power on. 2-switching from sort to non-sort or group. 3-resetting to top bin in the sort mode.	-
H1	Open heat roller thermal fuse.	Open F705 (3A) fuse -
H2	Open heat roller thermistor.	-
H3	Heat roller irregular high temperature. When temperature exceeds 240°C.	6 → 14
H4	Heater roller irregular low temperature. If heater roller does not reach 180°C in 5.5 minutes, status code H4 will be displayed. Once the heater roller reaches 180°C, the main motor will turn on. If the heater roller does not reach 190°C by 3.5 minutes after the main motor turns on, an H4 status code will also be displayed.	6 → 14
P1	Open copy lamp thermal fuse.	-
C1	Shorted or open MHVG unit or corona wire.	9
C2	Shorted or open THVG unit or corona wire.	10
U1	Voltage drop in the memory battery (below 4.2V.)	18, 19 → 13
U2	Data transfer trouble between the main circuit and memory circuit.	-
CH (ON)	Open front door or failure in the front door position sensing switch (DSWR or DSWL)	-
CH (Flicker)	Developing unit not inserted in the machine or connector contact failure.	
U3	Trouble in the dark box, mirror motor, mirror motor drive PWB, main PWB, optical system, or control unit.	When the PRINT switch is depressed and held after the occurrence of status code "U3", the trouble code is indicated on the display. (see following page)

Refer to the list below for the symptom and cause of status code "U3".

A more detailed status code will be displayed when the print switch is pressed and held after the appearance of status code "U3".

Trouble code	Symptom	Cause
40 (flicker)	The dark box home position sensor does not detect the position of the slide base (lens).	(Dark box unit) <ul style="list-style-type: none"> <li>• Failure in the stepping motor.</li> <li>• Failure in the home position sensor.</li> <li>• Failure in the slide base drive wire.</li> <li>• Failure in the pulley gear.</li> <li>• Imperfect stepping motor installation.</li> <li>• Failure in the wiring harness between the dark box unit and the mirror motor drive PWB.</li> <li>• Failure in the mirror motor drive PWB.</li> <li>• Slide base seized.</li> </ul>
10 (flicker)	MHPS does not detect the mirror base home position during the start of the mirror feed movement.	<ul style="list-style-type: none"> <li>• Failure in the MHPS.</li> <li>• Failure in the mirror motor drive PWB.</li> <li>• Failure in the main PWB.</li> <li>• Failure in the mirror motor.</li> <li>• Failure in the mirror base drive wire.</li> </ul>
8 (flicker)	Mirror motor failure	<ul style="list-style-type: none"> <li>• Mirror motor seized. Open F601 (2A) fuse.</li> <li>• No mirror motor output pulse.</li> <li>• Failure in 24VDC supply.</li> <li>• Failure in the mirror motor drive PWB.</li> </ul>
4 (flicker)	The stepping motor pulse count deviates by more than 10 pulses when the dark box unit slide base return to the normal position, from an enlarge or reduce position. Rotation of the stepping motor does not coincide with the movement of the slide base.	<ul style="list-style-type: none"> <li>• Failure in the stepping motor.</li> <li>• Failure in the slide base drive wire.</li> <li>• Failure in the slide base.</li> <li>• Failure in the pulley gear.</li> <li>• Imperfect stepping motor installation.</li> </ul>
0 (flicker)	Data transfer failure between the mirror motor drive PWB and the main PWB.	<ul style="list-style-type: none"> <li>• Failure in the main PWB.</li> <li>• Failure in the mirror motor drive PWB.</li> <li>• Failure in the wiring harness between the main motor PWB and the mirror motor drive PWB.</li> </ul>
20 (flicker)	The dark box mirror base collision prevention sensor has been actuated.	<ul style="list-style-type: none"> <li>• Failure in the MOPS</li> <li>• Failure in the mirror motor drive PWB.</li> <li>• Failure in the main PWB.</li> <li>• Failure in the mirror motor.</li> <li>• Failure in the mirror base drive wire.</li> <li>• Failure in the MOP lever.</li> </ul>