

**SHARP**<sup>®</sup>

DM-3551/DM-4551

**Network-Ready  
Multi-Tasking  
System**



**network office solutions**

extraordinary power. multi-faceted performance. unparalleled versatility.



# Product Highlights

## DM-3551/4551N DM-3551/4551S DM-3551/4551F

- 35/45 ppm Network Printing
- 1,200 dpi enhanced resolution with smoothing technology
- PCL5e/6 and PS3 emulations (standard)
- Standard Job Retention functions (hold print/sample print/confidential print) allow you to control printouts from the control panel
- Large 2,000-sheet paper capacity
- Handles special print media including OHP transparencies, index stock and envelopes
- 31" scan capability for oversized originals
- Scan<sup>2</sup> technology scans a 2-sided document in a single pass — maximizing productivity
- Finishing options include multi-position saddle-stitch finisher, 2-tray stapler/finisher or 8 bin mailbox/sorter
- Fax directly from any Windows PC application via the MFP Fax board without printing to paper first (F models)
- Flexible scanning destinations streamline workflow, save time, and reduce overnight mailing costs. Six destinations include: Scan to E-mail, Scan to Desktop, Scan to FTP, Scan to Fax, Scan to I-Fax, Scan to Group
- Enterprise device management integration with Computer Associates International Inc., Unicenter<sup>®</sup> TNG 2.2 or later, and IBM Tivoli<sup>®</sup> Netview 6.02 or later
- Sharp's Data Security Kit offers layers of advanced security. Encryption and overwrite features protect confidential information
- The Confidential Print feature requires a PIN number in both the Print Window and the MFP's LCD panel, giving users greater control over their documents
- MAC & IP filtering help protect against unauthorized network access



## setting the standard for multi-tasking and productivity

In today's business, you need to stay one step ahead. With Sharp's new DM-3551/4551 MFP's, it's never been so easy. Best-in-class multifunction features allow you to get more done in considerably less time. With powerful copy, print, scan, and fax capabilities, these multi-faceted performers will become the heart of your workgroup, and the center of productivity. Versatile input and output features enable workgroups and busy departments to adopt a truly digital workflow and share information more efficiently and cost effectively. Sophisticated software helps you manage, edit and distribute digital files simply and securely.

Available in 3 configurations out of the box, Sharp makes it easy to select the model that fits your needs today, while providing the flexibility you need as your business grows.

**N model** - network printing /copying

**S model** - network printing /scanning /copying

**F model** - network printing /scanning /faxing /copying



**Create it. Scan it. Store it. Send it.**

Now you can do it all with Sharp's new DM models.

# High Performance Features

## uncompromised productivity that gets the job done

### Do more than you ever thought possible.

Designed for busy mid-volume environments, Sharp's DM-3551/4551 models are redefining productivity. With copy/print speeds of 35/45 ppm and an available online paper capacity of 2,000 sheets, these powerful performers can do so much more in considerably less time.

### Impressive performance.

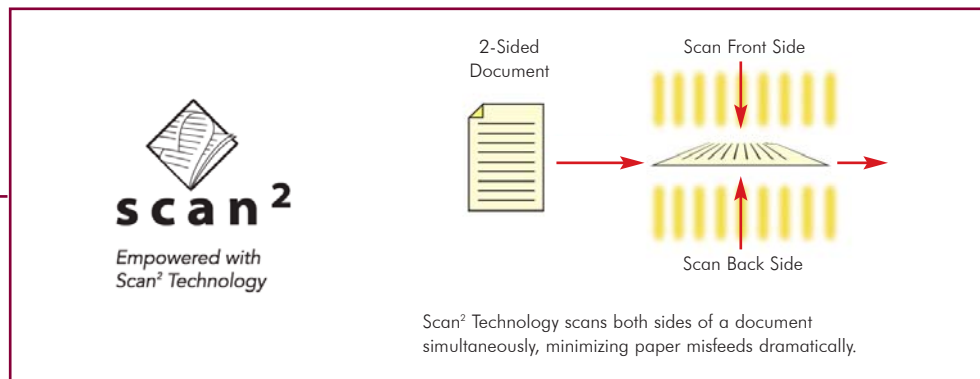
With a high-performance engine controller and Scan-Once, Print-Many technology, the DM-3551/4551 models deliver crisp **1200 dpi enhanced resolution** for superior quality output. But that's just the beginning. The **50-sheet Duplex Single Pass Feeder and Sharp's innovative Scan<sup>2</sup> Technology** scans both sides of a 2-sided document in one pass, minimizing paper misfeeds

and improving reliability. Documents are scanned with amazing speed, so even large projects are completed in a snap.

### Powerful network printing with point-and-click simplicity.

For powerful print functionality, the Sharp DM-3551/4551 models offer a PCL5e/6 + PS3 Printing System enabling them to be the hub of productivity in busy workgroups. With their standard **5 GB Hard Drive**, the Sharp DM-3551/4551 models offer heightened efficiency and processing power to jump-start your productivity. Standard features include:

- Duplex Printing on up to 97 lb. index from available multi-purpose tray enables you to produce a variety of documents in house
- Security-enabled NIC Card to restrict user access with IP/Mac Address Filtering.



## Professional Finishing Options



AR-FN7  
Saddle-Stitch  
Finisher

AR-MS1  
Mail Bin  
Stacker



AR-FN7  
Saddle Stitch  
Finisher

or



AR-FN6  
Two-Tray Finisher



Efficient, two-sided copying speeds up your workflow with the 50-sheet Duplex Single Pass Feeder.



The user-friendly touch screen LCD display with icon-driven graphics simplifies sophisticated features.

## Professional finishing capabilities deliver exceptional results.

With a choice of optional high-performance finishers, producing professionally-finished output is as easy as 1-2-3. Additionally, you can save time and money by minimizing outsourcing. The capability of on-demand, on-the-fly saddle-stitch finishing, 3-position stapling, hole-punching and more enables everyone in your workgroup to create professional documents that easily rival the results of quick-print establishments.

Select from either the **Two-Tray Finisher** or the **Saddle-Stitch Finisher**, which deliver a wide range of capabilities including 3-position stapling, center folding, 50-sheet stapling capacity, and more. For even more versatility, add the **Mail Bin Stacker** which offers a 250-sheet face-down delivery tray, as well as seven 100-sheet mail bins to help you organize your output.

# Document Distribution & Management

scan it. save it. send it.  
it really is that easy

## DM-3551/4551 "S" and "F" Models

### Powerful and flexible network scanning

Share documents across the network or across the world with versatile scan functionality. With Sharp's **ImageSEND** feature, the DM-3551/4551 models truly become the document distribution hub of the workgroup. To scan, simply load your document into the **Duplex Single-Pass Feeder**, and then send your files directly from the DM-3551/4551 control panel to as many as six different destinations. Send to Desktop, Send to E-mail, Send to FTP, Send to Group, Send to Fax and Send to i-Fax. ImageSEND allows for a truly digital workflow, providing incredible convenience, speed and increased efficiency.

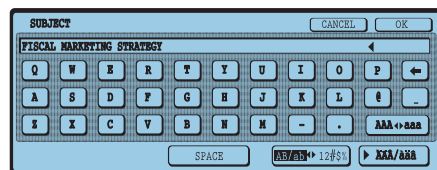
### Convenient LDAP support

With innovative **LDAP support** (Lightweight Directory Access Protocol), there's no need to manually enter a

recipient's address. Simply enter the first few characters of the address and the DM-3551/4551 models automatically search and display a list of matching names. And to reduce the risk of unauthorized scanned documents being e-mailed, integrated **User Authentication** requires users to log in before searching for an address and sending an outbound e-mail.

### Unique file naming

The new DM-3551/4551 models also support Unique File Naming, giving you the ability to enter specific filenames with customized message and subject fields.



Unique File Naming makes it easy for the recipient to recognize e-mailed documents.



With LDAP, users only need to enter the first few characters of the destination e-mail address—so sending a file is incredibly quick.

## DM-3551/4551 "F" Models

### Versatile, built-in faxing

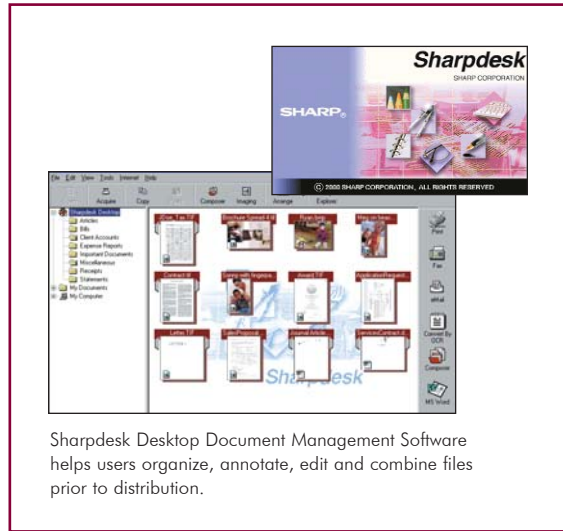
With lightening-fast speed, the powerful **Super G3 Fax** feature on "F" models provides incredible performance and versatility for high-volume environments. The innovative **PC-fax driver** enables users to fax documents directly from the desktop, saving time. Other powerful features include internet fax capability, single-pass duplex transmission of documents, simultaneous fax transmission and sequential broadcasting.

### Managing digital files has never been easier—and more seamless.

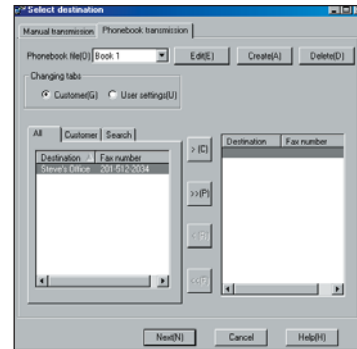
Powerful, flexible and intuitive, **Sharpdesk™** Document Management Software enables you to easily integrate scanned documents into your everyday workflow. Easy-to-use tools help you organize, edit, even combine scanned files for maximum productivity. The **Full Text Search** feature enables you to retrieve archived documents with incredible ease.

**SUPER  
G3**

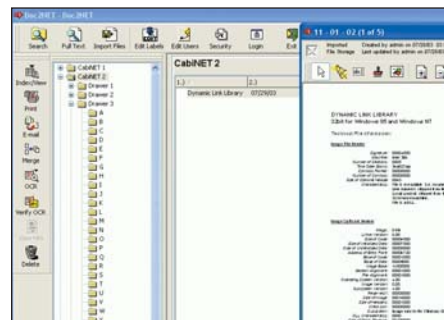
  
**ImageSEND**



Sharpdesk Desktop Document Management Software helps users organize, annotate, edit and combine files prior to distribution.



Sharp's PC-fax driver allows users to fax directly from the desktop—or an application—quickly and easily.



Sharp's alliances with leading developers make it easy to implement enterprise-level solutions for document archiving, forms generation, and more.

# Data/Device Security

## protect your business with Sharp's award-winning security

### The right security for your business

To help secure your electronic documents and restrict access, the DM 3551/4551 models offer several levels of network and data security to protect valuable data. A leader in office equipment security, Sharp enables IT professionals to safely deploy digital copying, printing, scanning and faxing in any business or government environment.

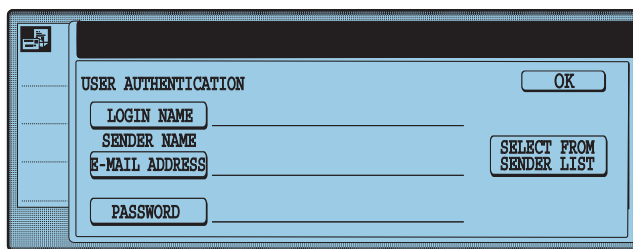
- To **protect your printed documents** from unauthorized viewing, the DM 3551/4551 models offer a Confidential Print feature, which requires users to enter a PIN code in order to release their queued document.
- To **protect your network** from unauthorized e-mail communications, the DM 3551/4551 models support User Authentication which requires users to log in before performing any network scanning operations (Standard on S + F models).
- To restrict access to the DM 3551/4551 models on your network, the DM Home Page offers IP/MAC Address Filtering.

- To protect your data, the standard Data Security Kit encrypts all data using 128 bit encryption. Additionally, the Data Security Kit sanitizes the memory in your DM 3551/4551 models by overwriting the encrypted data, offering an unprecedented level of assurance.

These scalable security offerings aim to protect your intellectual property, preserve confidential information and enable you to meet regulatory requirements, such as the Health Insurance Portability and Accountability Act (HIPAA), the Gramm Leach Bliley Act (GLB) and the Sarbanes-Oxley Act. For additional information visit [www.sharppusa.com/security](http://www.sharppusa.com/security).



More information about Sharp's leading-edge security features can be found on [www.sharppusa.com/security](http://www.sharppusa.com/security)



User Authentication requires users to log in to the machine before performing any network scanning operations, protecting it from unauthorized scanning and e-mail communications.



IP/MAC Address Filtering on the DM Home Page enables you to restrict access to the MFP.

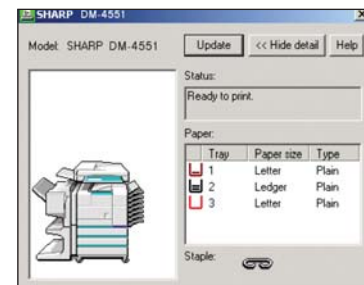
# Output/Device Management

manage your workflow  
with advanced, easy-to-use software

## The Sharp Administration Utility Suite

To help you manage the DM-3551/4551's versatile features, Sharp designed the Administration Utility Suite, a collection of easy-to-use software that can simplify the installation, monitoring, and usage of your Sharp DM Series MFP.

- Network users can view printer conditions through the Printer Status Monitor's easy-to-use interface. Check paper levels, toner, and more before you send your job.
- Printer Administration Utility helps IT Managers speed up installation and configuration of printers on the network as well as monitor any networked SNMP-compliant printers.
- IT Managers, Key Operators, and Authorized Sharp Dealers can automatically receive e-mails regarding the DM-3551/4551 models with Sharp's Remote E-mail Diagnostics.
- Get advanced web-based management for both user and administrator-level access with the DM Home Page. Users can easily create and manage their own network scanning destinations and profiles. Administrators can access device configuration, network settings, IP filtering, and protocol control right from the convenience of the desktop.



Printer Status Monitor



Printer Administration Utility

## Track and monitor printer activity

The DM-3551/4551's versatile functionality will make it the most widely-used printer in the workgroup. To monitor printer usage, Sharp includes standard print/copy accounting controls. The **Print/Copy Auditor** enables administrators and IT Managers to track usage by ID number (up to 100 accounts) as well as by PIN code authorization.



# End User Advantage

## setting Sharp apart from the competition

### Award-winning Products, Leading Edge Technology

Recognized throughout the industry for best-in-class features, Sharp products set the standard for performance, value and reliability. Year after year, Sharp's hardware and software solutions receive prestigious accolades and coveted awards from virtually every independent office equipment analyst. Two such awards focus on Sharp's technological leadership in the areas of network scanning and document security. Buyers Laboratory Inc. has awarded Sharp the **Outstanding Multifunctional Imaging Device Scan Solution for 2004**, and BERTL has recognized Sharp's innovation in document and data security with the **2004 BERTL's Best Award for Security Solutions**.



BLI Outstanding Achievement Award for  
Multifunctional Imaging Device Scan  
Solutions, Spring, 2004



BERTL Rated - Best  
Security Solutions 2004

### My Sharp

Integrating Sharp products into your day-to-day workflow brings more than just leading edge technology to your business. Sharp recognizes the critical role that technology support plays in the success of your business. That's why **Sharp products are now accompanied by a technology and training support website that is custom built for your DM Series MFP**. This website is called My Sharp. My Sharp is a web-based program offering you information on Sharp products from any web-enabled computer every day 24/7. My Sharp offers high-level support in an easy-to-use format. Ask your DM Reseller for information about this powerful program.



### Consumer replaceable supplies

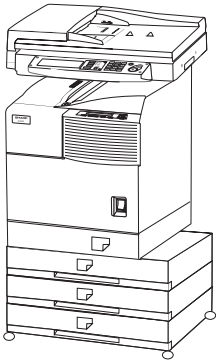
The DM model comes with easy-to-use cartridge based supplies that are replaceable by the consumer. There is no need for a service call or interruption of your workflow.

### Warranty

Sharp provides you with ready access to expert service for your Sharp DM product. All DM models come with Sharp's 1 Year, On-Site, Next-Day, parts and labor, limited warranty. 1 and 2 Year Next-Day or Same-Day warranty extensions and Installation Packages are also available. Contact your Sharp DM-Series Reseller for more information.

# Product Configuration

## DM-3551/4551 at-a-glance



DM-3551/4551  
Host Machine  
(Version "N", "S" or "F")

### N Model

- 35/45 ppm Engine
- Powerful network printing system with PCL5e/6/PS3 emulations
- Duplex scanning with Sharp's unique Scan<sup>2</sup> technology
- Automatic trayless duplex copying/printing
- 2000 sheet paper capacity
- Award-winning data security with MAC and IP filtering
- Sharp Administration Utility Suite

### S Model

- 35/45 ppm Engine
- Powerful network printing system with PCL5e/6/PS3 emulations
- Duplex scanning with Sharp's unique Scan<sup>2</sup> technology
- Automatic trayless duplex copying/printing
- 2000 sheet paper capacity
- Award-winning data security with MAC and IP filtering
- Sharp Administration Utility Suite
- Advanced network scanning with LDAP support
- Sharpdesk Personal Document Management Software

### F Model

- 35/45 ppm Engine
- Powerful network printing system with PCL5e/6/PS3 emulations
- Duplex scanning with Sharp's unique Scan<sup>2</sup> technology
- Automatic trayless duplex copying/printing
- 2000 sheet paper capacity
- Award-winning data security with MAC and IP filtering
- Sharp Administration Utility Suite
- Advanced network scanning with LDAP support
- Sharpdesk Personal Document Management Software
- Robust Super G3 Fax Function

### Finishing Options\*

- Two-tray Finisher
- Saddle-stitch Finisher
- Eight-bin Mailbox/Sorter

\* Contact your Sharp DM Reseller for available configurations

# Specifications

## GENERAL

Type:	Console
Copy system:	Dry, electrostatic transfer system
Paper size:	Max. 11" x 17" / Min. 5.5" x 8.5"
Paper capacity:	2,000 sheets
Copy/print speed (max):	35/45 cpm/ppm (8.5" x 11")
Memory:	320MB RAM and internal 5GB HDD standard
Warm-up time: <sup>1</sup>	Less than 80 seconds
First copy time:	5.3 sec. (35ppm); 4.6 sec. (45ppm) (8.5" x 11", 1st paper tray, fast platen mode)
Power requirements:	Rated local AC voltage $\pm$ 10%, 50/60 Hz
Power consumption:	Max. 1.44 kW
Dimensions (WxDxH):	32 7/16" x 26 11/64" x 43 37/64" (incl. scanner and paper desk)
Weight:	Approx. 220 lbs. (incl. scanner and paper desk)
Account codes:	100

## PRINTING (Standard)

Resolution:	600 dpi, 1,200 dpi enhanced with smoothing technology
Interface:	RJ-45 Ethernet with IP/MAC/Protocol filtering; IEEE1284 Parallel Port
Printer drivers:	Windows® 95/98/Me, Windows NT® 4.0, Windows® 2000, Windows® XP, Macintosh System 8.5.1-10.2
PDL:	PCL5e, PCL6, Emulated PostScript Level 3 standard
Available fonts:	45 fonts for HP PCL, 136 fonts for PS
Other features:	Paper/output tray selection, duplex print, watermarks, pamphlet style, job retention for confidential/sample print, N-up, B&W reverse, mirror image, form overlay, fit to page, auto configuration, easy print (stores settings), confidential print, sample print. Note: some features are not available on all print drivers.

## NETWORK SCANNING (Standard on all "S" and "F" models, optional on "N" models)

Resolution:	200, 300, 600 dpi
Compatibility:	TWAIN compliant (push out method)
Sharpdesk licenses:	10-user licenses included (can add 1,5,50 & 100 packs)
Max. original size:	11"x17", duplex document - can scan up to 31" in length
Destinations:	Scan to E-mail, Scan to Fax, Scan to I-Fax, Scan to Desktop, Scan to FTP, Scan to Group
File types:	Single or Multi-page TIFF and PDF
User authentication:	Supports Anonymous, Simple, NTLM, Digest-MD5, Kerberos

## NETWORK INTERFACE (Standard on all DM models)

Type:	RJ-45 ethernet, 10Base-T/100Base-TX
Platforms supported:	UNIX, Windows 95/98/Me, Windows NT 4.0, Windows 2000, Windows XP, Novell Netware 3.x/4.x (IntranetWare)/Netware5, Macintosh System 8.5.1-10.2
Network protocols:	IPX/SPX, TCP/IP, EtherTalk, NetBEUI
Printing protocols:	Novell Printserver Application w/NDS and Bindery, Printer resident LPD, IPP

## COPYING (standard)

Original size:	Max. 11" x 17" - can scan up to 31" in length
Continuous copy:	Max. 999 copies
Resolution copy:	600 dpi
Zoom range:	From 25% to 400% with 8 preset ratios (4 reduction + 4 enlargement), from 25% to 200% from DSPF
Other features:	Auto paper selection, auto magnification selection, paper type selection, auto tray switching, E-Sort, rotation copy, reserved copy, pre-heat/auto power shut-off modes, copy auditing (100 accounts), margin shift, edge/centre erase, dual page copy mode, multi-shot copy (N in 1), booklet copy

## Faxing (standard on "F" models, optional on "N" and "S" models)

Transmission time: <sup>2</sup>	Approx. 2 seconds (Super G3): 6 seconds (G3)
Compression method:	MH, MR, MMR, JBIG
Modem speed:	33.6Kbps/2.4Kbps automatic fallback
Transmission mode:	Super G3, G3
Line type:	PSTN, PBX
Image quality:	256 grayscale levels
Exposure adjustment:	Dark/Auto/Light
Resolution settings:	Normal/Small Letter/Fine/Extra Fine
Auto dial destinations:	500 (e-mail addresses included)
PC fax:	Direct fax from Windows applications (standard)

## OPTIONS

Choose from 3 finishing options (saddle-stitch finisher, 2-bin stapler finisher or mailbox sorter). Please contact your DM-Series Reseller for further details.

## LIMITED WARRANTY

All DM models come with Sharp's 1 Year, On-Site, Next-Day, parts and labor, limited warranty. 1 and 2 Year Next-Day or Same-Day warranty extensions and Installation Packages are also available. Contact your Sharp DM-Series Reseller for more information.

Design and specifications are subject to change without notice.

Sharp is a registered trademark of Sharp Corporation. All other trademarks are property of their respective holders.

<sup>1</sup> At rated voltage, 20 C (68 F), 65% RH.

<sup>2</sup> Based on ITU-T Test Chart #1 in standard resolution. Actual transmission time will vary based on line conditions.



As an ENERGY STAR® Partner, SHARP has determined that this product meets the ENERGY STAR® guidelines for energy efficiency.

Sharp Electronics Corporation  
Sharp Plaza, Mahwah, NJ 07430-1163  
1-800-BE-SHARP  
[www.sharppusa.com](http://www.sharppusa.com)

# SHARP®