

SHARP®



Multifunction Desktop IMAGER™
with Full-Color PC Scanning

Digital
iMAGER™
Advanced Document System

AR-M1600



Versatile Performance for All Your Business Needs.

The new Sharp AR-M160 Digital IMAGER™ delivers everything you need in a low-cost multifunction copier — and much more. With a 250-sheet paper capacity, 100-sheet bypass tray, and standard 600 dpi host-based PC printing, the AR-M160 IMAGER can handle even the busiest offices. And, that's just the beginning. This powerful performer also delivers **standard full-color ledger-size PC scanning** — enabling you to easily respond to today's graphic-intensive demands. And, with versatile options like 100-page electronic sorting and a speed-enhanced printing system upgrade, it's easy to add functionality as your business needs evolve.



copy | print | color scan

AR-M160

The Sharp AR-M160 Digital IMAGER™ combines industry-leading features with advanced functionality— all in a compact desktop design.

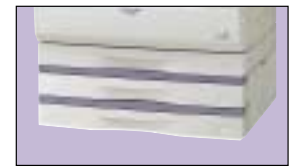
Versatile, built-in color PC scanning!

What's the latest Sharp innovation? Standard full-color PC scanning! Sharp leads the industry with ledger-size, full-color PC scanning for on-the-fly versatility. Now there's no need for extra peripherals that take up valuable office space—with Sharp ingenuity, we've built everything into one compact multi-function device. And with Sharpdesk™ integrated desktop document management software, you can edit, save, or distribute your document—quickly and effortlessly.



Efficient, high-quality copying

The AR-M160 IMAGER provides many flexible copy features designed to grow with your business. With speedy output, 11" x 17" capability, and optional electronic sorting, the AR-M160 IMAGER is the smart choice for any small office or workgroup.



Add the optional 250-sheet x2 adjustable paper trays for a total online paper capacity of 850 sheets.

- 600 dpi true laser-quality output
- 16 copies per minute
- Scan-Once Print-Many Memory Management
- 25% - 400% zoom range with 8 preset ratios
- Cost-effective Toner-Save mode
- Optional 40-sheet Single Pass Document Feeder (SPF)

Key features

- 350-sheet paper capacity, upgradeable to 850 sheets (with options), includes 100-sheet Bypass Tray
- Standard offset stacking separates each copy/print job for easy retrieval
- 16 MB standard memory, upgradeable to 288 MB with options
- 600 dpi host-based PC printing system
- Full color 600 x 1200 dpi PC scanning¹
- Sharpdesk integrated desktop document management software
- Button Manager utility allows easy configuration of 6 one-touch scan-to-desktop keys
- Standard IEEE 1284 parallel and USB-1.1 ports for flexible PC connections²

Productive functionality

For even more productivity, add the Function Upgrade Kit, which offers 16 MB additional memory, electronic sorting, speed-enhanced PC printing, and a USB 2.0 port for efficient device sharing. And, for busy workgroups, you can add the optional PCL6 Network Printing/Scanning Kit (available late 2003).

Function Upgrade Kit adds:

- 100-page electronic sorting, which offers offset sort stacking, rotation copy, two-in-one/four-in-one copy, edge erase, center erase, and margin shift
- JBIG speed-enhanced printing system upgrade, which offers Rip-Once Print-Many memory management and 16-ppm printing performance
- USB-2.0 PC data port allows a third user to connect to the AR-M160 for efficient device sharing
- 16 MB additional memory with expansion capability to add 256 MB option

TechTalk

USB 2.0 transfer rates are up to 40X faster than USB 1.1

¹Non-interpolated ledger-size color scanning at 600 dpi requires AR-EB7 Function Upgrade Kit and 256 MB memory expansion

²PC scanning is only performed through USB port

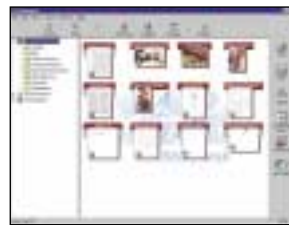
AR M 1 6 0



Printer Driver Screen



PC Scan Destination Details



Complete document management on your PC with Sharpdesk

General Specifications		Paper Type:
Type:	Digital simplex copier-based MFP, desktop	<ul style="list-style-type: none"> Paper Cassettes: 15-24 lb. standard or recycled bond paper Bypass Tray (multi-sheet feed): up to 100 sheets 15-20 lb. standard bond or recycled bond paper, up to 30 sheets for postcards, up to 5 sheets for envelopes (#10 monarch) Bypass (single-sheet feed): 15-54 lb. standard or recycled bond paper, OHP, Labels, and envelopes
Copy System:	Dry electrostatic transfer system	Memory: 16 MB (shared), expandable to 288 MB with options ¹
Originals:	Sheets, bound documents	Copy Resolution: Scan: 600 DPI, Output: 600 DPI
Original Size:	11" x 17" maximum	Exposure Modes: Photo Mode: 600 x 600 dpi Auto Exposure: 600 x 300 dpi
Copy Size:	Min. 5 1/2" x 8 1/2", Max. 11" x 17"	Gray Scale: 256 gradations/2 levels
Copy Speed:	16 copies per minute (8 1/2" x 11") 12 copies per minute (8 1/2" x 11"R) 10 copies per minute (8 1/2" x 14") 9 copies per minute (11" x 17")	Copy Features: Scan-Once Print-Many, Auto Paper Sensing (APS), Auto Magnification Sensing (AMS), auto tray switching, memory copy, manual zoom
Continuous Copy:	Max. 99 copies	Output Tray Capacity: 250 sheets (face down)
First Copy Out Time:	7.2 Seconds	Offset Stacking: Standard paper shifter (multi-page sort requires AR-EB7)
Warm Up Time:	45 Seconds	Fusing System: Heat roller
Zoom Range:	25% to 400% in 1% increments (with SPF 50-200%)	Developer System: Magnetic brush development
Fixed Zoom Mode:	50%, 64%, 77%, 95%, 100%, 121%, 121%, 129%, 141%, 200%	Light Source: Cold cathode lamp
Exposure System:	Fixed optical source, slit exposure (stationary platen) with automatic exposure	Power Requirement: AC 120 V, 60 HZ, 12 Amps
Paper Feed System:	Standard: (1) 250-sheet paper cassette with automatic feed (1) 100-sheet manual bypass tray Optional: (1) 250-sheet paper feed unit or (1) 500-sheet paper feed unit (250 x 2)	Power consumption: Max 1200 W, stand-by 5 W
Original Feed System:	Standard: Original table with platen cover Optional: 40-sheet single pass document feeder (SPF)	Weight: Approx. 70 lbs.
		Dimensions: 23 15/64"(w) x 21 15/32"(d) x 18 33/64"(h)

Printer Function		Optional AR-EB7 Function Upgrade Kit
Print Speed:	10 pages per minute/16 pages per minute with optional AR-EB7 Function Upgrade Kit	Memory: 16 MB standard (shared), expandable to 272 with 256 MB DIMM
Emulation:	Host-based/JBIG speed enhanced host-based with optional AR-EB7 Function Upgrade Kit	Electronic Sort Function: Scan capacity for sort/group: up to 100 sheets with 6% original offset stacking, rotation copy, 2-in/1/4-in-1 copy, edge erase, center erase, margin shift
Resolution:	600 dpi	Printer Function: JBIG speed enhanced printing system upgrade increases print speed to 16 PPM Read-Once Print-Many: Up to 50 pages @ 600 dpi (16 MB shared memory)
Operating System:	Windows® 95/98ME, NT4.0, 2000, XP	USB 2.0 Data Port: For scanning and printing, increases data transfer speed up to 480 Mbps*
Software:	Print driver, Printer Status Monitor	* Requires USB-2.0 Connection at host PC
Read Once Print Many:	Available with optional AR-EB7 Function Upgrade Kit, up to 50 pages @ 600 dpi	Optional Equipment
Interface:	Standard: IEEE 1284 (ECP) parallel port, USB 1.1 Optional: USB 2.0 with optional AR-EB7 Function Upgrade Kit	AR-EB7: Function Upgrade Kit (Dual Function Board)
Page Memory:	16 MB (shared), expandable to 288 MB with options ¹	AR-SP6: 40-sheet single pass feeder
Features:	Offset print, status monitor, N-up printing, fit to page, watermark, center position	AR-D24: 250-sheet paper feed unit (single cassette)
		AR-D25: 500-sheet paper feed unit (dual 250-sheet cassettes)
		Supplies
		AR-202MT: Toner cartridge
		AR-202MD: Developer
		AR-202DR: Drum cartridge

¹ Optional ER-EB7 Function Upgrade Kit provides 16 MB additional memory, which can be expanded to 272 MB with 256 MB DIMM

² Non-interpolated ledger size color scanning @ 600 dpi or higher requires optional AR-EB7 with 256 MB memory expansion

³ Resolution settings higher than 600 x 1200 DPI are interpolated

Design and specifications subject to change without notice.
Sharp is a registered trademark of Sharp Corporation. All other trademarks are property of their respective holders.

