



imagine workgroup laser MFPs  
that work as hard as you do.

SCX-6322DN/SCX-6122FN Mono Laser MFPs



## Components



1. DADF/ADF (Duplex Automatic Document Feeder/Automatic Document Feeder)

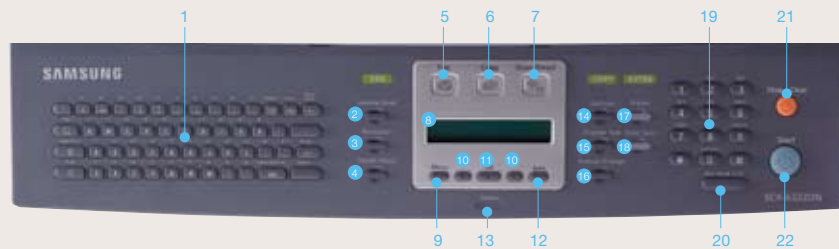
2. Document Width Guides  
3. Document Input Tray  
4. Document Output Tray

5. Control Panel  
6. Multi-Purpose Tray  
7. Front Cover  
8. Release Lever  
9. Scanner Lid  
10. Tray 1  
11. Optional Tray

12. Output Support  
13. Power Switch  
14. Power Receptacle  
15. Extension Telephone Socket (EXT)  
16. Telephone Line Socket (LINE)

17. Parallel Port  
18. USB Port  
19. Network Port  
20. ADF Connector

## Control Panel



1. Keyboard  
2. Address Book  
3. Resolution  
4. Redial/Pause  
5. Fax Mode  
6. Copy Mode

7. Scan/Email  
8. Display  
9. Menu  
10. Scroll Buttons  
11. OK  
12. Back

13. Machine Status  
14. Contrast Control  
15. Original Copy Type  
16. Reduce/Enlarge  
17. Duplex Copy  
18. Toner Save Mode

19. Number Keypad  
20. On Hook Dial  
21. Stop/Clear  
22. Start

# Samsung SCX-6322DN/SCX-6122FN

**Digital duplex copier, laser printer, color scanner and high-speed fax machine.**

The fastest print and copy speeds in their class. Simple network integration. Automatic duplexing. 20,000 page per month duty cycles. The SCX-6322DN/SCX-6122FN MFPs are ready to work. Combining four business machines into space-saving, efficient productivity centers, Samsung MFPs are more than the sum of their parts. With innovative features that let you do more than you ever have before, you can work better. Work more efficiently. Work smarter. With the Samsung SCX-6322DN/SCX-6122FN MFPs, it's not hard to imagine.

They're paper-saving digital duplex copiers.



### Standard DADF (Duplex Automatic Document Feeder)

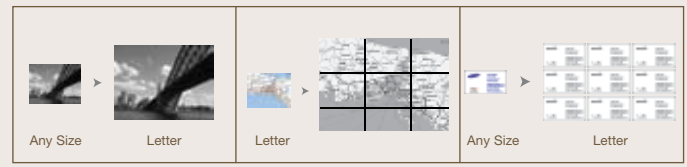
Save paper and create professional duplex (2-sided) documents in 4 copy formats, including 1:1, 1:2, 2:1 and 2:2 with simple one-touch buttons (SCX-6322DN only).

### Easy Operation

The intuitively designed backlit operation panel has ergonomic one-touch buttons, a clear LCD display and an Error Indicator for instant job status and more direct control.



ID Card Copy



Auto-Fit Copying

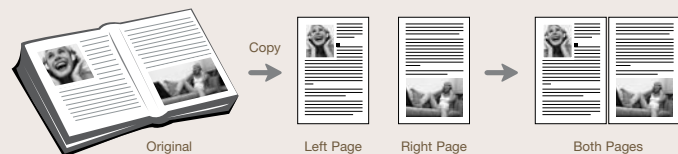
Poster Printer

Clone Copying

**Advanced One-Button Copying** Get more out of your copier with editing functions like Clone, Auto-Fit, 2-up, Poster and ID Card copy, in addition to 25%~400% Zoom and 999 page Multi-copy.



**23 Pages per Minute** The fastest copy speeds in their class will make quick work of your largest documents.



Book Copy

### Auto Margin Shift and Book Copy

Create a binding edge for the document by shifting the image horizontally or vertically. Then copy an entire book by using Book Copy options like Left Page, Right Page or Both Pages.



Auto Margin Shift

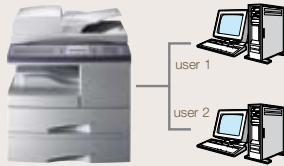
**High Volume Paper Capacity** The standard 550-sheet paper tray, 100-sheet multi-purpose tray, optional 550-sheet additional tray and output capacity of 250 sheets means you can copy more with less reloading.

## They're high-resolution laser printers.

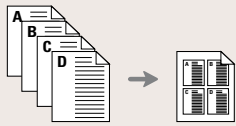
**Printouts** The superb output of up to 1,200 dpi will have you always looking your sharpest.

**23 Pages per Minute** With fast printout speeds and high speed USB 2.0 interfaces, you'll never have to wait long.

**Network Printing** The advanced capabilities of the SCX-6322DN/SCX-6122FN can be shared over a network, to make print management simple for small workgroups.



1,200x1,200 dpi



Multiple Pages per Side



Booklet Printing



Watermark and Overlay



Duplex (2-sided) Printing-Long Edge

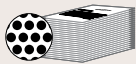


Duplex (2-sided) Printing-Short Edge



Scaling

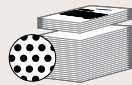
**Professional Layouts** Print professional-looking documents with Multiple Pages per Side, Scaling, Fit to Page, Poster, Duplex Printing, Booklet Printing, Watermark and Overlay features.



Standard Toner Yield  
8,000 sheets

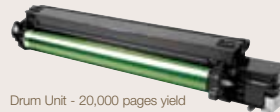


Toner Save



Toner Yield with One-touch Save Function  
8,000 sheets + 2,400 sheets

**Toner Save Button for up to 30% Savings** Just push the one-touch button to reduce toner consumption by up to 30% while still producing high-quality printouts in a slightly lighter tone.



Drum Unit - 20,000 pages yield



Toner Cartridge - 8,000 pages yield

**Economic 2-piece Consumables** Allows you to maximize the 20,000 page yield drum unit by replacing the 8,000 page yield toner cartridge separately, thereby extending the drum unit's usability.

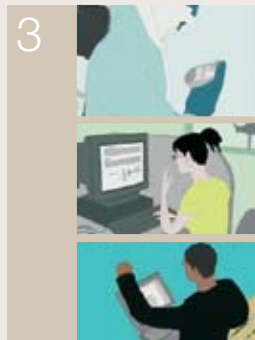
## They're scanners for the digital age.



**Scan to Email** Email documents to anyone in the world directly from your network-connected multi-function printer. For example, members of a Mergers and Acquisition Team might want to share sensitive hard copy reports or news articles. All they have to do is scan the relevant pages with their Samsung MFP, select the address, add a message subject on the full e-mail keypad, and send. Confidentiality is maintained throughout. Supports PDF, JPEG and TIFF file formats.

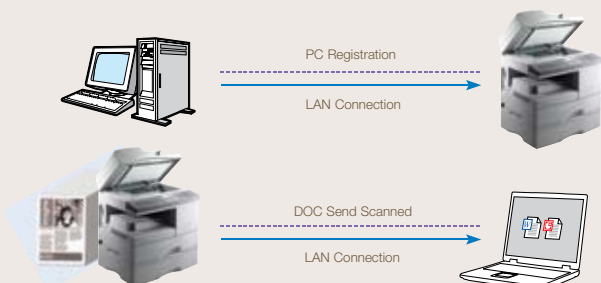


The standard keyboard on the SCX-6322DN and optional network kit enable the direct transfer of scanned images via E-mail.



1. Enter e-mail addresses 2. Scan document 3. Send to multiple e-mail recipients

**LDAP Scan Management** The LDAP (Lightweight Directory Access Protocol) is a networking protocol for querying and modifying directory services running over TCP/IP. With this feature, you'll always have your most current e-mail address book available for Scan to Email.

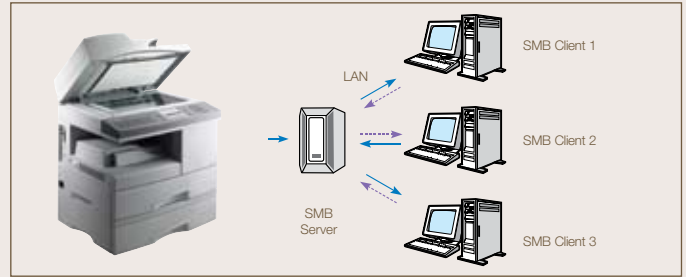


Scan to Network lets you scan documents directly to your network, saving paper and time.

**Scan to Network** An easy way to capture and store information from hard copy documents. Featuring the same walk-up simplicity of our other scanning solutions, Scan to Network lets you scan directly to your document management applications. Creates PDF, JPEG and TIFF file formats.



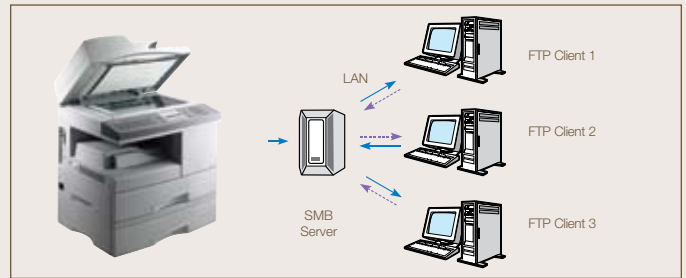
**Scan to SMB** With the Scan to SMB (Server Message Block) feature, users can store scanned documents directly to a shared folder in the user's PC. Up to 20 destinations can be designated as a shared folder. Scan to SMB is more secure than Scan to FTP because the password is encrypted. It also allows transmission of larger documents than Scan to E-mail, since there is no limitation of document size. Scan to SMB does not require an additional client program, and can be set up to shared folders through SyncThru™ Web Service. Supports Microsoft Windows, TCP/IP and other network protocols.



Scan to SMB securely transmits large quantities of documents directly to up to 20 PCs, even without a server.



**Scan to FTP** Scan to FTP is an efficient way to digitize and transmit large quantities of documents. Simply scan hardcopy documents, convert them to digital format, and store them in a specified directory on an internal or external FTP server. Scanned data stored on the FTP server can be accessed from an FTP client program installed on the user's PC or a web browser. Scan to FTP is designed especially for larger files and provides a strategic complement to Scan to E-mail. Scan to FTP can handle files of near limitless proportions, and is the perfect tool for archiving larger documents.



Scan to FTP transmits large quantities of documents quickly to up to 20 servers.

## They're productivity machines.

**SyncThru™ Web Service Printer Management Tool** Increase productivity with SyncThru™ Web Service. This user-friendly printer configuration tool requires no installation in the form of an embedded web server that can be accessed by a web browser. It gives administrators the ability to easily change network and individual printer settings, upgrade firmware and view network printer status.



Remote Configuration and Monitoring of Network Printer



Use Popular Web Browsers without Installing Extra Software



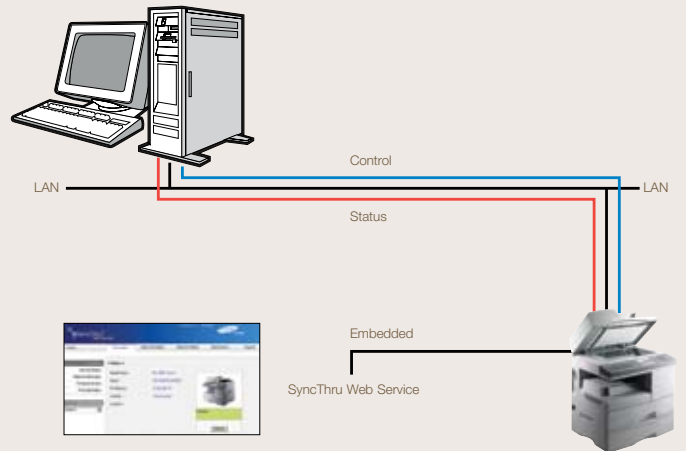
Modification Enabled by Authorized User (Password Protection)



Print Out Configuration Sheet of Network Printer



Firmware Upgrade of Printer and Printer Card

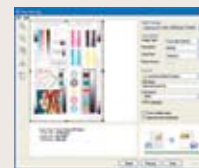


## SmarThru™ Office Document Management Software

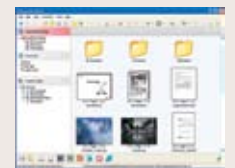
A powerful document management application for Office users. It creates, stores and edits scanned images, and delivers them to each application. It also makes it easy to take advantage of all the features of the SCX-6322DN/SCX-6122FN MFPs, even with complicated networks. SmarThru™ Office also provides network scan as a default, so you don't have to install additional applications. And SmarThru™ client lets users scan documents directly to their PC.



Network Scan View



Local Scan View



SmarThru™ Office Main Page

# Specifications

|   | SCX-6322DN   | SCX-6122FN  |
|---|--|---|
| Functions                               |  |   |
| Print/Copy/Scan/Fax                     | Yes  | Yes   |
| Print                                   |  |   |
| Print Speed                             | Up to 23 ppm, Duplex up to 13 ipm  | Up to 23 ppm, Duplex up to 13 ipm   |
| First Print Out                         | Less than 12 seconds (from Standby mode)   | Less than 12 seconds (from Standby mode)  |
| Print Resolution                        | Up to 1,200 dpi effective output   | Up to 1,200 dpi effective output  |
| Printer Memory                          | 64 MB  | 64 MB   |
| Print Language                          | PCL 6, PostScript 3  | PCL 6, PostScript 3   |
| Duplex Print                            | Standard   | Standard  |
| Duty Cycle                              | Up to 20,000 per month, AMPV 4,000 pages   | Up to 20,000 per month, AMPV 2,500 pages  |
| Copy                                    |  |   |
| Copy Speed                              | Up to 23 cpm   | Up to 23 cpm  |
| First Copy Out                          | Less than 10 seconds   | Less than 10 seconds  |
| Copy Resolution (Optical)               | Up to 600 x 600 dpi Text, Text/Photo mode: 600 x 300 dpi, Photo mode: 600 x 300 dpi (Platen), 600 x 600 dpi (DADF) | Up to 600 x 600 dpi Text, Text/Photo mode: 600 x 300 dpi, Photo mode: 600 x 300 dpi (Platen), 600 x 600 dpi (ADF) |
| Reduction and Enlargement               | 25-400%, ADF 25-100%   | 25-400%, ADF 25-100%  |
| Multiple Copies                         | Up to 999 copies   | Up to 999 copies  |
| Duplex Copy                             | Standard (1:2, 2:2) Duplex ADF   | Standard (1:2) Simplex ADF  |
| Fax                                     |  |   |
| Modem Speed, Fax Speed                  | 33.6 Kbps, Approx. 3 sec. per page   | 33.6 Kbps, Approx. 3 sec. per page  |
| Compression Mode, Compatibility         | MH/MR/MMR (ECM Mode)/JBIG/JPEG, ITU-T Group 3  | MH/MR/MMR (ECM Mode)/JBIG/JPEG, ITU-T Group 3   |
| Fax Memory                              | 8 MB   | 8 MB  |
| Fax Resolution                          | Standard: 203 x 98 dpi, Fine: 203 x 196 dpi, Super Fine: 203 x 391 dpi, 300 x 300 dpi, 406 x 392 dpi               | Standard: 203 x 98 dpi, Fine: 203 x 196 dpi, Super Fine: 203 x 391 dpi, 300 x 300 dpi, 406 x 392 dpi              |
| Speed Dial                              | 40 one-touch dial, 240 speed dial  | 40 one-touch dial, 240 speed dial   |
| Scan                                    |  |   |
| Scan Resolution (Optical/Enhanced)      | Up to 600 dpi/4,800 dpi  | Up to 600 dpi/4,800 dpi   |
| Scan Technology                         | Color CCD  | Color CCD   |
| Compatibility                           | Twain standard, WIA standard   | Twain standard, WIA standard  |
| Bit Depth (Text, Grayscale, Color)      | 1 bit, 8 bit, 24 bit (36 bit internal)   | 1 bit, 8 bit, 24 bit (36 bit internal)  |
| Scan to Destinations                    | Email, FTP, SMB, Client  | Email, FTP, SMB, Client   |
| Gray Scale                              | 256 Levels   | 256 Levels  |
| Scan Size (Maximum)                     | Legal (8.2" x 14" effective scan area)   | Legal (8.2" x 14" effective scan area)  |
| Paper Handling                          |  |   |
| Max Paper Size                          | 8.5" x 14" legal   | 8.5" x 14" legal  |
| Paper Input Capacity                    | 550-sheet cassette tray, 100-sheet multipurpose tray   | 550-sheet cassette tray, 100-sheet multipurpose tray  |
| Paper Output Capacity (Face-Down)       | 250 sheets   | 250 sheets  |
| Automatic Document Feeder Capacity      | Duplex, 50 sheet, Width: 5.6" - 8.5", Length: 5" - 14"   | Simplex, 40 sheet, Width: 6.9" - 8.5", Length: 5" - 14"   |
| Supplies                                |  |   |
| Toner                                   | SCX-6320D8, 8,000 pages  | SCX-6320D8, 8,000 pages   |
| Drum                                    | SCX-6320R2, 20,000 pages   | SCX-6320R2, 20,000 pages  |
| General                                 |  |   |
| Connectivity, Standard                  | USB 2.0, 10/100 Base-TX Ethernet, IEEE 1284  | USB 2.0, 10/100 Base-TX Ethernet, IEEE 1284   |
| Operating System Compatibility          | Windows 98, Me, NT4.0, 2000, XP, Mac 10.3-10.4, Various Linux systems (USB)  | Windows 98, Me, NT4.0, 2000, XP, Mac 10.3-10.4, Various Linux systems (USB)                                       |
| Acoustics (Operating, Standby, Warm Up) | Less than 65 dBA, less than 40 dBA, less than 48 dBA   | Less than 65 dBA, less than 40 dBA, less than 48 dBA  |
| Power Requirement                       | 110-127VAC 50.60 Hz, 6.0A or 220-240VAC, 50/60 Hz, 3.5A  | 110-127VAC 50.60 Hz, 6.0A or 220-240VAC, 50/60 Hz, 3.5A   |
| Power (PowerSave, Standby, Operation)   | 28 watts, 100 watts, 450 watts   | 28 watts, 100 watts, 450 watts  |
| Operating Conditions                    | Temperature: 10°C - 32°C (50°F - 89°F), Humidity: 20% - 80% RH   | Temperature: 10°C - 32°C (50°F - 89°F), Humidity: 20% - 80% RH  |
| LCD                                     | 2 line x 20 characters   | 2 line x 20 characters  |
| Warm-up Time                            | Less than 25 seconds (from sleep mode)   | Less than 25 seconds (from sleep mode)  |
| Dimensions (W x D x H)                  | 22.0" x 16.9" x 19.4"  | 22.0" x 16.9" x 18"   |
| Weight                                  | 56.5 lbs.  | 49.7 lbs.   |

## Options

|                 |   |
|-----------------|---|
| Options         |   |
| Second Cassette | SCX-56122A (550 sheet letter/legal)                             |
| Stand           | SCX-6320G5, Dimensions (W x D x H) 21.5" x 16" x 22.1"; 35 lbs. |

©2007 Samsung Electronics America, Inc. Samsung is a registered trademark of Samsung Electronics Corp., Ltd. Specifications and design are subject to change without notice. See [www.samsung.com](http://www.samsung.com) for detailed information. Printed in USA. SCX63222/07R1



Distributed by: